

Does God Exist?

(Evidence for God-Part 2)

How to Defend Your Faith

Cumulative Case



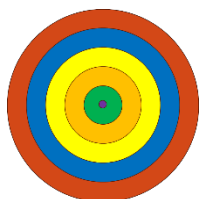
Cumulative case approach simply weighs the evidence to determine what is more plausible or more probable

Arguments for God

1. Beginning (Cosmological Argument)
2. **Design (Teleological Argument)**
3. Morality (Moral Argument)
4. Being (Ontological Argument)
5. Truth (Basis - Objective Truth)

Teleological Argument (Design)

Every level of creation shows complexity & design.



- Universe Level (Cosmos)
- Galactic Level (Milky Way)
- Regional Level (Solar System)
- Local Level (Planetary/Earth)
- Personal Level (Life)
- Sub-Atomic Level

Universe Level (Cosmos)

The Universe exhibits extremely fine-tuned parameters, including.

- Gravitational force. 10^{60}
- Electromagnetic forces. 10^{37}
- Cosmological Constant. 10^{120}
- Mass Density of Universe 10^{59}
- Expansion Rate of Universe 10^{55}
- Initial Entropy (10^{123})

Other finely tuned parameters include, strong & weak nuclear force constant, mass excess of a neutron over proton, ratio of masses for protons and electrons, velocity of light, and another 120 or so other finely tuned parameters that we know of, and others will probably be discovered.

Galactic Level (Milky Way)

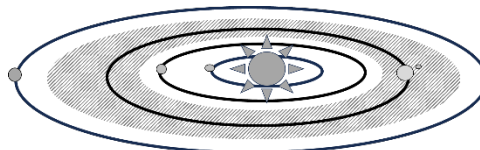
Our galaxy is exactly the right shape, size and density to support life. It has the exact right number of stars, size and intensity of stars, distances between stars. It spins at exactly the perfect speed. And all the many many specific parameters give rise to what Astronomers call the "Goldilocks Zone".

The Goldilocks zone means there is a specific region right about here where life supporting solar systems can possibly exist.

Regional Level (Solar System)

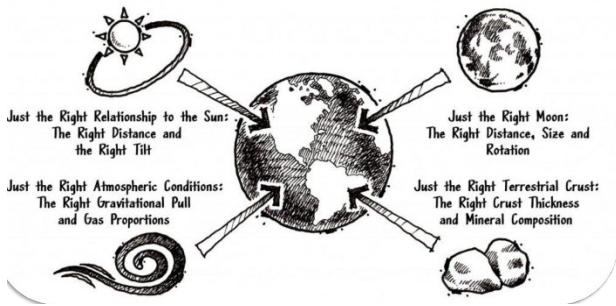
Our Solar System is precisely what it needed for life,

- Sun (Right size & type)
- Earth (perfect location)
- Gas giants (Jupiter, Saturn, Uranus, & Neptune) are perfect locations and sizes to protect earth. (Note the rotation and orbits are all different)



Earth is in a finely tuned "habitable zone"

Local Level (Planetary/Earth)

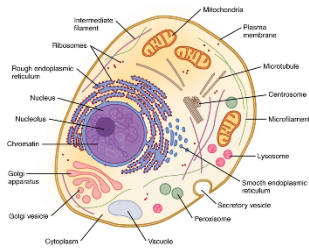


Our Solar System is precisely what it needed for life,

- Perfect location (not too hot/not too cold),
- Tilt (provide seasons),
- Rotational speed (regulates temperature),
- Orbit (consistent weather, tides, etc),
- perfect size (gravitational forces, weather),
- Moon (size, location, orbit)
- Water
- Atmosphere (composition, temperature)
- Magnetic Field
- Composition of Earth Crust

Earth is finely tuned with all necessary components for life to thrive.

Personal Level (Life)



All of these complex components must be in place for a cell to live... not one at a time via random mutation or stepwise evolution.

“If it could be demonstrated that any complex organ existed which could not possibly have been formed by numerous, successive, slight modifications, my theory would absolutely break down.” --Darwin Origin of Species

Examples;

- Plant Cell complexity (Photosynthesis, cell wall, etc
- High School Biology (Consumers & Producers)
- Complexity of “simple” organisms (Ameba)
- Bacteria (Flagellar Motor, Injectisome)
- DNA, RNA, peptides, proteins, amino acids

“DNA is like a computer program but far, far more advanced than any software ever created.”

—Bill Gates founder of Microsoft

Sub-Atomic Level (Building Blocks)

The smaller we look the more diverse and complex the science gets,

- Atomic components (proton, neutron, electrons)
- Quarks
- Photons (Light)
- Gamma Rays, Microwaves, etc
- Heat, Radiation,
- Theoretical particles like,
 - Tachyons
 - Neutrinos
 - Strings
 - Dark Mater

The smaller the more finely tuned and ordered.

“for the scientist who has lived by his faith in the power of reason, the story ends like a bad dream. He has scaled the mountains of ignorance; He is about to conquer the highest peak; As he pulls himself over the final rock, he is greeted by a band of theologians who have been sitting there for centuries. —Robert Jastrow